

---

# DFA U.S. Core Equity Fund

## Management Report of Fund Performance

*For the year ended December 31, 2016*

The annual management report of fund performance contains financial highlights but does not contain the complete annual financial statements of the DFA U.S. Core Equity Fund (the “Fund” or “Portfolio”). You can get a copy of the annual financial statements at your request, and at no cost, by calling Dimensional Fund Advisors Canada ULC (“Dimensional”) collect at 604-685-1633, by writing to Dimensional at 745 Thurlow Street, Suite 2110, Vancouver, BC, Canada, V6E 0C5 or by visiting Dimensional’s website at [www.ca.dimensional.com](http://www.ca.dimensional.com) or SEDAR at [www.sedar.com](http://www.sedar.com).

Unitholders may also contact Dimensional using one of these methods to request a copy of the Fund’s proxy voting policies and procedures, proxy voting disclosure record, or quarterly portfolio disclosure.

---

# DFA U.S. Core Equity Fund

## Management Report of Fund Performance

### Investment Objective and Strategies

The DFA U.S. Core Equity Fund pursues long-term capital appreciation by investing primarily in common stocks of U.S. companies.

The Fund will generally purchase a broad and diverse group of readily marketable securities of U.S. companies traded on an exchange or on the over-the counter market, with increased exposure to securities of small companies and to securities that Dimensional Fund Advisors LP (“Dimensional U.S.”), the Fund’s sub-advisor, considers to be “value” stocks.

Generally, size is determined based upon market capitalization and value is assessed based upon the stock’s market price relative to one or more fundamental characteristics. For example, Dimensional U.S. may consider a stock to be a value stock if the company has a high book value, earnings or cash flow relative to the market price of the company’s stock.

### Risk

There were no material changes to the Fund over the course of the year affecting the overall risk exposure. The Fund will continue to be fully exposed to foreign market risk, as well as the risks associated with investments in small company stocks and value stocks, which may behave differently from conventional market benchmarks such as the Russell 3000® Index (“Index”). Currency movements had a negative effect on the Fund’s Class A, Class F, and Class I units (the “unhedged classes”) returns over the past year. The unhedged classes will continue to be exposed to currency risk and currency movements may negatively impact the unhedged classes returns in the future. The Class A(H), Class F(H), and Class I(H) units (the “hedged classes”) of the Fund are suitable for investors who wish to minimize exposure to fluctuations in the U.S. Dollar relative to the Canadian Dollar. The unhedged classes of the Fund are suitable for investors who wish to be exposed to fluctuations in the U.S. Dollar relative to the Canadian Dollar. For a complete description of the hedged and unhedged classes, please refer to the Fund’s simplified prospectus.

The Fund engages in securities lending transactions and, as a result, is exposed to securities lending risk. Securities lending risk includes the risk that the value of collateral held by the Fund may be insufficient to fully replace loaned securities and the risk of defaults on the obligations to return the securities to the Fund. These risks may make an investment in the Fund riskier than if the Fund did not lend securities. Investors are encouraged to read the description of securities lending risk contained in the simplified prospectus. The Fund will also continue to be exposed to the other risks described in the Fund’s simplified prospectus.

### Results of Operations

The Fund held approximately 2,400 securities as at December 31, 2016. In general, cash exposure throughout the period was less than 1% of the Fund’s Net Asset Value. As a result of the Fund’s diversified investment approach,

performance was determined principally by broad trends in the U.S. equity market rather than the behavior of a limited number of stocks.

For the year ended December 31, 2016, total returns were 11.93% for the Class F units, 14.33% for the Class F(H) units, 10.67% for the Class A units, 13.10% for the Class A(H) units, 12.27% for the Class I units, 14.70% for the Class I(H) units, and 8.84% for the Index.

Each class of the Fund’s units outperformed the Index due to the Fund’s greater emphasis on value stocks and small cap stocks, both of which outperformed the overall Index. Each of the Fund’s hedged classes outperformed the corresponding unhedged classes due to the appreciation of the Canadian Dollar against the U.S. Dollar.

All returns for the Index are unhedged and are not diminished by management, administrative, and applicable U.S. withholding tax expenses associated with managing a portfolio of securities.

Net returns of Class A and Class A(H) units were diminished by a trailer fee payable to securities dealers. Dealers generally pay a portion of these fees to investment professionals for services they provide to their clients.

### Recent Developments

Dimensional will continue to pursue a disciplined quantitative approach to identify securities for purchase or sale. In contrast to many investment firms, Dimensional does not seek to predict the future course of business conditions, market trends, or interest rates. Dimensional believes that securities markets are highly competitive and prices reflect available information quickly enough that efforts to outperform the market ordinarily promise little or no payoff after taking account of research and transaction costs. Instead, Dimensional seeks to capture a market rate of return associated with various broad risk factors while reducing company or industry risk through diversification.

### Related-Party Transactions

Dimensional is the manager, trustee, and principal portfolio advisor of the Fund. As manager, Dimensional is responsible for the overall management and administration of the Fund. As trustee, Dimensional holds legal title to the Fund’s investments in trust for the Fund’s unitholders. For its services, Dimensional receives management fees that are calculated as a percentage of the average Net Asset Value of the Fund. These fees are calculated daily and payable monthly.

As principal portfolio advisor, Dimensional is responsible for managing the investment portfolio of the Fund directly or through sub-advisors. Dimensional has retained its ultimate parent company, that Dimensional U.S., to act as the Fund’s sub-advisor. Dimensional U.S. is responsible for investment analysis and decision making, implementing securities transactions, selecting broker-dealers, acquiring research information, voting proxies, and monitoring the Fund’s investment guidelines. The fees of the sub-advisor are paid by Dimensional.

**DFA U.S. Core Equity Fund**  
Management Report of Fund Performance

Dimensional has adopted written policies and procedures with respect to the supervision and monitoring of the services provided by Dimensional and Dimensional U.S. and received standing instructions from the Fund's Independent Review Committee ("IRC") to act in accordance with these policies and procedures. These standing instructions require Dimensional to report to the IRC any material exceptions to compliance with these policies and procedures.

**DFA U.S. Core Equity Fund**  
Management Report of Fund Performance

**Financial Highlights**

The following tables show selected key financial information about the Fund and are intended to help you understand the Fund's financial performance for the past five years, as applicable. Per unit data is derived from the Fund's financial statements.

Ratios and supplemental data are derived from the Fund's Net Asset Value.

**The Fund's Net Assets per Unit (\$)<sup>(1)</sup>**

	CLASS A					CLASS A(H)				
	2016	2015	2014	2013	2012	2016	2015	2014	2013	2012
<b>Net Assets, beginning of year</b>	<b>\$ 18.44</b>	<b>\$ 16.18</b>	<b>\$ 13.77</b>	<b>\$ 9.67</b>	<b>\$ 8.59</b>	<b>\$ 23.18</b>	<b>\$ 24.22</b>	<b>\$ 22.34</b>	<b>\$ 16.68</b>	<b>\$ 14.42</b>
<b>Increase (decrease) from operations:</b>										
Total revenue	0.34	0.32	0.26	0.20	0.19	0.44	0.43	0.41	0.33	0.32
Total expenses	(0.27)	(0.26)	(0.22)	(0.18)	(0.15)	(0.34)	(0.35)	(0.35)	(0.29)	(0.25)
Realized gains (losses) for the year	0.84	1.28	1.02	0.55	0.11	1.53	(2.36)	(0.12)	(0.45)	0.94
Unrealized gains (losses) for the year	0.85	1.00	1.42	3.58	0.99	1.98	1.40	1.97	6.14	1.34
<b>Total increase (decrease) from operations<sup>(2)</sup></b>	<b>\$ 1.76</b>	<b>\$ 2.34</b>	<b>\$ 2.48</b>	<b>\$ 4.15</b>	<b>\$ 1.14</b>	<b>\$ 3.61</b>	<b>\$ (0.88)</b>	<b>\$ 1.91</b>	<b>\$ 5.73</b>	<b>\$ 2.35</b>
<b>Distributions:</b>										
From income (excluding dividends)	-	-	-	-	-	-	-	-	-	-
From dividends	(0.07)	(0.11)	(0.08)	(0.04)	(0.04)	(0.14)	(0.13)	(0.10)	(0.06)	(0.06)
From capital gains	-	-	-	-	-	-	-	-	-	-
Return of capital	-	-	-	-	-	-	-	-	-	-
<b>Total annual distributions<sup>(3)</sup></b>	<b>(0.07)</b>	<b>(0.11)</b>	<b>(0.08)</b>	<b>(0.04)</b>	<b>(0.04)</b>	<b>(0.14)</b>	<b>(0.13)</b>	<b>(0.10)</b>	<b>(0.06)</b>	<b>(0.06)</b>
<b>Net Assets, end of year</b>	<b>\$ 20.33</b>	<b>\$ 18.44</b>	<b>\$ 16.18</b>	<b>\$ 13.77</b>	<b>\$ 9.67</b>	<b>\$ 26.07</b>	<b>\$ 23.18</b>	<b>\$ 24.22</b>	<b>\$ 22.34</b>	<b>\$ 16.67</b>
	CLASS F					CLASS F(H)				
	2016	2015	2014	2013	2012	2016	2015	2014	2013	2012
<b>Net Assets, beginning of year</b>	<b>\$ 18.65</b>	<b>\$ 16.39</b>	<b>\$ 13.93</b>	<b>\$ 9.78</b>	<b>\$ 8.68</b>	<b>\$ 23.28</b>	<b>\$ 24.34</b>	<b>\$ 22.45</b>	<b>\$ 16.76</b>	<b>\$ 14.49</b>
<b>Increase (decrease) from operations:</b>										
Total revenue	0.34	0.32	0.27	0.20	0.19	0.44	0.44	0.42	0.33	0.32
Total expenses	(0.07)	(0.06)	(0.06)	(0.05)	(0.04)	(0.09)	(0.09)	(0.10)	(0.08)	(0.07)
Realized gains (losses) for the year	0.86	1.31	1.07	0.58	0.11	1.44	(2.27)	(0.09)	(0.41)	0.95
Unrealized gains (losses) for the year	0.98	1.04	1.42	3.62	0.98	1.88	1.22	2.00	6.11	1.35
<b>Total increase (decrease) from operations<sup>(2)</sup></b>	<b>\$ 2.11</b>	<b>\$ 2.61</b>	<b>\$ 2.70</b>	<b>\$ 4.35</b>	<b>\$ 1.24</b>	<b>\$ 3.67</b>	<b>\$ (0.70)</b>	<b>\$ 2.23</b>	<b>\$ 5.95</b>	<b>\$ 2.55</b>
<b>Distributions:</b>										
From income (excluding dividends)	-	-	-	-	-	-	-	-	-	-
From dividends	(0.29)	(0.32)	(0.23)	(0.17)	(0.15)	(0.38)	(0.41)	(0.34)	(0.28)	(0.25)
From capital gains	-	-	-	-	-	-	-	-	-	-
Return of capital	-	-	-	-	-	-	-	-	-	-
<b>Total annual distributions<sup>(3)</sup></b>	<b>(0.29)</b>	<b>(0.32)</b>	<b>(0.23)</b>	<b>(0.17)</b>	<b>(0.15)</b>	<b>(0.38)</b>	<b>(0.41)</b>	<b>(0.34)</b>	<b>(0.28)</b>	<b>(0.25)</b>
<b>Net Assets, end of year</b>	<b>\$ 20.56</b>	<b>\$ 18.65</b>	<b>\$ 16.39</b>	<b>\$ 13.93</b>	<b>\$ 9.78</b>	<b>\$ 26.21</b>	<b>\$ 23.28</b>	<b>\$ 24.34</b>	<b>\$ 22.45</b>	<b>\$ 16.76</b>
	CLASS I					CLASS I(H)				
	2016	2015	2014	2013	2012	2016	2015	2014	2013	2012
<b>Net Assets, beginning of year</b>	<b>\$ 18.98</b>	<b>\$ 16.68</b>	<b>\$ 14.18</b>	<b>\$ 9.94</b>	<b>\$ 8.83</b>	<b>\$ 18.09</b>	<b>\$ 18.92</b>	<b>\$ 17.45</b>	<b>\$ 13.02</b>	<b>\$ 11.26</b>
<b>Increase (decrease) from operations:</b>										
Total revenue	0.35	0.33	0.27	0.21	0.19	0.35	0.34	0.32	0.26	0.25
Total expenses	(0.01)	(0.01)	(0.01)	(0.01)	(0.01)	(0.01)	(0.01)	(0.02)	(0.01)	(0.01)
Realized gains (losses) for the year	0.92	1.36	1.13	0.62	0.12	1.10	(1.68)	(0.01)	(0.22)	0.62
Unrealized gains (losses) for the year	1.24	1.00	1.44	3.61	0.92	1.36	0.94	1.61	4.67	0.99
<b>Total increase (decrease) from operations<sup>(2)</sup></b>	<b>\$ 2.50</b>	<b>\$ 2.68</b>	<b>\$ 2.83</b>	<b>\$ 4.43</b>	<b>\$ 1.22</b>	<b>\$ 2.80</b>	<b>\$ (0.41)</b>	<b>\$ 1.90</b>	<b>\$ 4.70</b>	<b>\$ 1.85</b>
<b>Distributions:</b>										
From income (excluding dividends)	-	-	-	-	-	-	-	-	-	-
From dividends	(0.35)	(0.39)	(0.28)	(0.21)	(0.18)	(0.35)	(0.39)	(0.33)	(0.27)	(0.24)
From capital gains	-	-	-	-	-	-	-	-	-	-
Return of capital	-	-	-	-	-	-	-	-	-	-
<b>Total annual distributions<sup>(3)</sup></b>	<b>(0.35)</b>	<b>(0.39)</b>	<b>(0.28)</b>	<b>(0.21)</b>	<b>(0.18)</b>	<b>(0.35)</b>	<b>(0.39)</b>	<b>(0.33)</b>	<b>(0.27)</b>	<b>(0.24)</b>
<b>Net Assets, end of year</b>	<b>\$ 20.92</b>	<b>\$ 18.98</b>	<b>\$ 16.68</b>	<b>\$ 14.18</b>	<b>\$ 9.94</b>	<b>\$ 20.37</b>	<b>\$ 18.09</b>	<b>\$ 18.92</b>	<b>\$ 17.45</b>	<b>\$ 13.02</b>

(1) This information is derived from the Fund's audited annual financial statements. For the financial years beginning on or after January 1, 2014, the financial highlights were derived from the Fund's financial statements prepared in accordance with International Financial Reporting Standards ("IFRS"). For the financial year ended December 31, 2013, the financial highlights were restated to comply with IFRS reporting. For financial years beginning before January 1, 2013, the financial highlights were derived from the Fund's financial statements prepared in accordance with Canadian GAAP. For financial years beginning on or after January 1, 2013, all references to "Net Assets" or "Net Assets per Unit" in the financial highlights are references to net assets attributable to holders of redeemable units determined in accordance with IFRS as presented in the financial statements of the Fund.

(2) Net Assets and distributions are based on the actual number of units outstanding at the relevant time. The increase/decrease from operations is based on the weighted average number of units outstanding over the financial year.

(3) Distributions were paid in cash/reinvested in additional units of the Fund, or both.

**DFA U.S. Core Equity Fund**  
Management Report of Fund Performance

**Ratios and Supplemental Data**

	CLASS A					CLASS A(H)				
	Dec 31, 2016	Dec 31, 2015	Dec 31, 2014	Dec 31, 2013	Dec 31, 2012	Dec 31, 2016	Dec 31, 2015	Dec 31, 2014	Dec 31, 2013	Dec 31, 2012
Total net asset value (\$) (000's) <sup>(1)</sup>	124,299	130,518	116,549	108,165	77,493	44,232	26,397	28,097	33,200	28,564
Number of units outstanding (000's) <sup>(1)</sup>	6,115	7,080	7,201	7,853	8,014	1,697	1,139	1,160	1,486	1,713
Management expense ratio <sup>(2)</sup>	1.47%	1.45%	1.50%	1.49%	1.56%	1.43%	1.45%	1.49%	1.49%	1.57%
Management expense ratio before waivers or absorption <sup>(2)</sup>	1.47%	1.45%	1.50%	1.49%	1.56%	1.43%	1.45%	1.49%	1.49%	1.57%
Trading expense ratio <sup>(3)</sup>	0.01%	0.01%	0.01%	0.01%	0.01%	0.01%	0.01%	0.01%	0.01%	0.01%
Portfolio turnover rate <sup>(4)</sup>	15.04%	21.65%	19.21%	9.71%	6.30%	15.04%	21.65%	19.21%	9.71%	6.30%
Net asset value per unit (\$)	20.33	18.44	16.18	13.77	9.67	26.07	23.18	24.22	22.34	16.68
	CLASS F					CLASS F(H)				
	Dec 31, 2016	Dec 31, 2015	Dec 31, 2014	Dec 31, 2013	Dec 31, 2012	Dec 31, 2016	Dec 31, 2015	Dec 31, 2014	Dec 31, 2013	Dec 31, 2012
Total net asset value (\$) (000's) <sup>(1)</sup>	476,227	457,044	403,696	326,952	212,255	241,493	165,869	153,152	141,652	112,354
Number of units outstanding (000's) <sup>(1)</sup>	23,160	24,501	24,637	23,469	21,711	9,214	7,124	6,291	6,309	6,704
Management expense ratio <sup>(2)</sup>	0.35%	0.34%	0.39%	0.38%	0.42%	0.37%	0.36%	0.41%	0.40%	0.45%
Management expense ratio before waivers or absorption <sup>(2)</sup>	0.35%	0.34%	0.39%	0.38%	0.42%	0.37%	0.36%	0.41%	0.40%	0.45%
Trading expense ratio <sup>(3)</sup>	0.01%	0.01%	0.01%	0.01%	0.01%	0.01%	0.01%	0.01%	0.01%	0.01%
Portfolio turnover rate <sup>(4)</sup>	15.04%	21.65%	19.21%	9.71%	6.30%	15.04%	21.65%	19.21%	9.71%	6.30%
Net asset value per unit (\$)	20.56	18.65	16.39	13.93	9.78	26.21	23.28	24.34	22.45	16.76
	CLASS I					CLASS I(H)				
	Dec 31, 2016	Dec 31, 2015	Dec 31, 2014	Dec 31, 2013	Dec 31, 2012	Dec 31, 2016	Dec 31, 2015	Dec 31, 2014	Dec 31, 2013	Dec 31, 2012
Total net asset value (\$) (000's) <sup>(1)</sup>	346,348	266,767	206,423	140,769	75,887	272,765	196,989	148,407	102,863	50,387
Number of units outstanding (000's) <sup>(1)</sup>	16,554	14,054	12,379	9,930	7,631	13,392	10,890	7,844	5,895	3,870
Management expense ratio <sup>(2)</sup>	0.03%	0.02%	0.06%	0.04%	0.07%	0.04%	0.03%	0.07%	0.05%	0.09%
Management expense ratio before waivers or absorption <sup>(2)</sup>	0.03%	0.02%	0.06%	0.04%	0.07%	0.04%	0.03%	0.07%	0.05%	0.09%
Trading expense ratio <sup>(3)</sup>	0.01%	0.01%	0.01%	0.01%	0.01%	0.01%	0.01%	0.01%	0.01%	0.01%
Portfolio turnover rate <sup>(4)</sup>	15.04%	21.65%	19.21%	9.71%	6.30%	15.04%	21.65%	19.21%	9.71%	6.30%
Net asset value per unit (\$)	20.92	18.98	16.68	14.18	9.94	20.37	18.09	18.92	17.45	13.02

<sup>(1)</sup> This information is derived from the Fund's audited annual financial. For the financial years beginning on or after January 1, 2014, the financial highlights were derived from the Fund's financial statements prepared in accordance with IFRS. For the financial year ended December 31, 2013, the financial highlights were restated to comply with IFRS reporting. For financial years beginning before January 1, 2013, the financial highlights were derived from the Fund's financial statements prepared in accordance with Canadian GAAP. For financial years beginning on or after January 1, 2013, all references to "Net Assets" or "Net Assets per Unit" in the financial highlights are references to net assets attributable to holders of redeemable units determined in accordance with IFRS as presented in the financial statements of the Fund.

<sup>(2)</sup> Management expense ratio is based on total expenses (excluding broker commissions and other portfolio transaction costs) for the stated year and is expressed as an annualized percentage of daily average Net Asset Value during the year.

<sup>(3)</sup> The trading expense ratio represents total commissions and other portfolio transaction costs expressed as an annualized percentage of daily average Net Asset Value during the year.

<sup>(4)</sup> The Fund's portfolio turnover rate indicates how actively the Fund's portfolio advisor manages its portfolio investments. A portfolio turnover rate of 100% is equivalent to the Fund buying and selling all of the securities in its portfolio once in the course of the year. The higher a Fund's portfolio turnover in a year, the greater the trading costs payable by the Fund in the year, and the greater the chance of an investor receiving taxable capital gains in the year. There is not necessarily a relationship between a high turnover rate and the performance of the Fund.

# DFA U.S. Core Equity Fund

## Management Report of Fund Performance

### Management Fees

Dimensional receives management fees for its service as manager of the Fund. These fees are calculated as a percentage of the Net Asset Value of the Fund and are calculated daily and payable monthly. The table below shows the annual management fee rates for each class of units of the Fund.

Annual Rate	Class A	Class F	Class I
Management Fees	1.25%	0.25%	0%

Annual Rate	Class A(H)	Class F(H)	Class I(H)
Management Fees	1.25%	0.25%	0%

Dimensional pays a trailer fee to dealers out of the management fee received for Class A and Class A (H) units of the Fund. These trailer fees are generally calculated as a percentage of the average daily Net Asset Value of Class A and Class A (H) units of the Fund held by the dealer's clients or by the dealer on behalf of the clients. The maximum annual trailer fee for the Class A and Class A (H) units of the Fund is 1.00%. The balance of the management fees are for the general management and administrative services provided to the Fund. The table below shows a breakdown of the services received by the Fund as a percentage of management fees.

	Class A	Class F	Class I
Management and Administrative Services	20%	100%	0%
Trailer Fees	80%	0%	0%
	100%	100%	0%

	Class A(H)	Class F(H)	Class I(H)
Management and Administrative Services	20%	100%	0%
Trailer Fees	80%	0%	0%
	100%	100%	0%

No management fees are charged to the Fund with respect to Class I and Class I (H) units. Instead, each Class I and Class I (H) investor pays a separate fee directly to the manager of the Fund.

### Past Performance

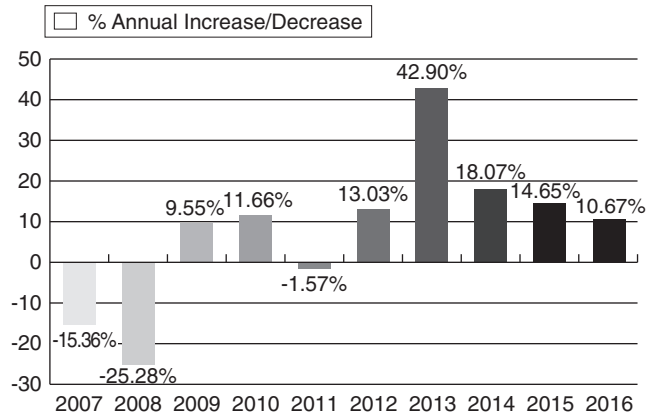
The performance information shown assumes that all distributions made by the Fund during the periods shown were reinvested in additional units of the Fund. The performance information does not take into account any sales, redemption, distribution, or other optional charges that would have reduced returns or performance. How the Fund has performed in the past does not necessarily indicate how it will perform in the future.

### Year-by-Year Returns

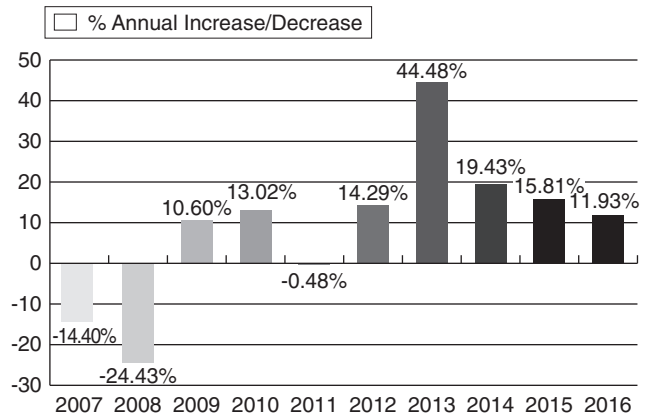
The bar charts show the Fund's annual performance for each of the financial years shown, and how the Fund's performance has changed from year to year. The charts show, in percentage terms, how much an investment made on the first day of each

financial year would have increased or decreased by the last day of that financial year.

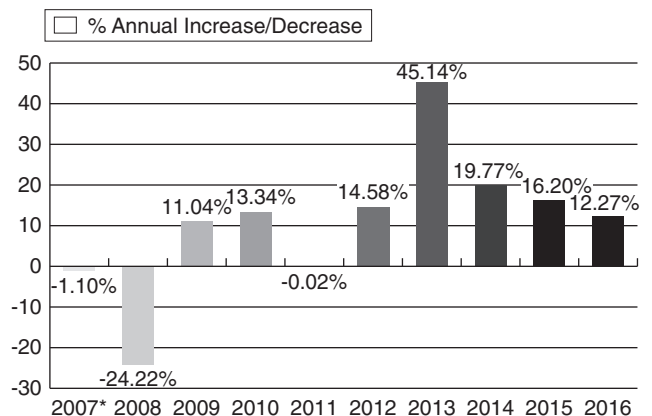
### DFA U.S. Core Equity Fund – Class A



### DFA U.S. Core Equity Fund – Class F



### DFA U.S. Core Equity Fund – Class I

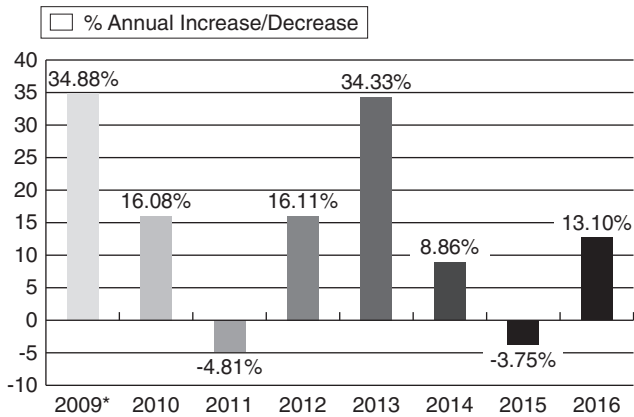


\* The information presented for 2007 is for the period from December, 21, 2007 to December 31, 2007.

# DFA U.S. Core Equity Fund

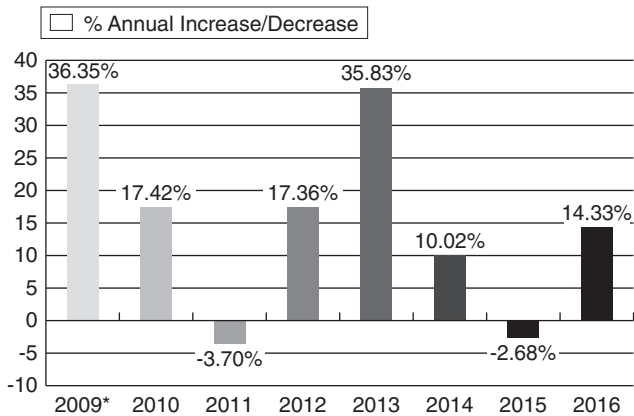
## Management Report of Fund Performance

### DFA U.S. Core Equity Fund – Class A(H)



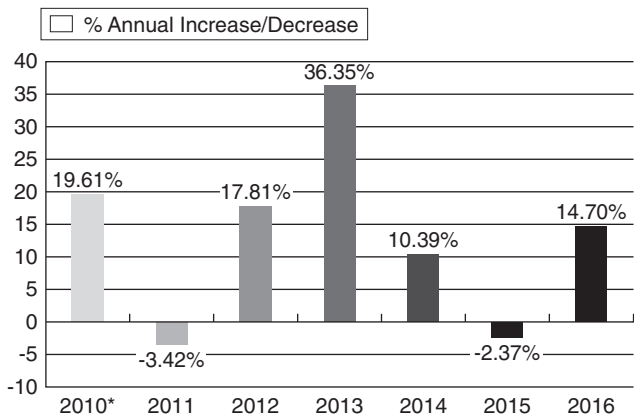
\* The information presented for 2009 is for the period from January, 27, 2009 to December 31, 2009.

### DFA U.S. Core Equity Fund – Class F(H)



\* The information presented for 2009 is for the period from January 26, 2009 to December 31, 2009.

### DFA U.S. Core Equity Fund – Class I(H)



\* The information presented for 2010 is for the period from May 21, 2010 to December 31, 2010.

### Annual Compound Returns

The following table compares the Fund's historical annual compound returns for the periods shown ending on December 31, 2016. The historical annual compound total returns are also compared to the Index and benchmark.

Index returns are calculated in Canadian Dollars on a total return basis; that is, all distributions are reinvested. The Index measures the performance of the 3,000 largest U.S. companies based on total market capitalization. Results for the Index and benchmark are not diminished by management fees, administrative expenses or taxes associated with managing a portfolio of securities.

#### Percentage Return:

	1-Year	3-Year	5-Year	10-Year
DFA U.S. Core Equity Fund – Class A	10.67%	14.42%	19.33%	6.30%
Russell 3000 Index (CAD)	8.84%	17.19%	21.16%	8.60%

#### Percentage Return:

	1-Year	3-Year	5-Year	10-Year
DFA U.S. Core Equity Fund – Class F	11.93%	15.68%	20.65%	7.48%
Russell 3000 Index (CAD)	8.84%	17.19%	21.16%	8.60%

#### Percentage Return:

	1-Year	3-Year	5-Year	10-Year	Since Inception
DFA U.S. Core Equity Fund – Class I	12.27%	16.04%	21.04%		10.44%
Russell 3000 Index (CAD)	8.84%	17.19%	21.16%		10.76%

#### Percentage Return:

	1-Year	3-Year	5-Year	10-Year	Since Inception
DFA U.S. Core Equity Fund – Class A(H)	13.10%	5.82%	13.07%		13.63%
Russell 3000 Index (CAD)	8.84%	17.19%	21.16%		17.39%

#### Percentage Return:

	1-Year	3-Year	5-Year	10-Year	Since Inception
DFA U.S. Core Equity Fund – Class F(H)	14.33%	6.97%	14.30%		14.89%
Russell 3000 Index (CAD)	8.84%	17.19%	21.16%		17.09%

# DFA U.S. Core Equity Fund

## Management Report of Fund Performance

### Percentage Return:

	1-Year	3-Year	5-Year	10-Year	Since Inception
DFA U.S. Core Equity Fund – Class I(H)	14.70%	7.32%	14.71%		13.37%
Russell 3000 Index (CAD)	8.84%	17.19%	21.16%		18.10%

### Summary of Investment Portfolio

as at December 31, 2016

Sector Mix	% of Fund's Net Asset Value
Consumer Discretionary	13.77
Consumer Staples	7.28
Energy	6.83
Financials	20.09
Health Care	10.21
Industrials	12.49
Information Technology	16.95
Materials	3.32
Real Estate	3.21
Telecommunication Services	3.42
Utilities	2.07
Cash and Cash Equivalents	0.45
Currency Forward*	(0.29)
Net Other Assets	0.20
	<u>100.00</u>

\* Currency Forwards are hedged against Classes A(H), F(H), and I(H) of the Fund.

Top 25 Issuers	% of Fund's Net Asset Value
01 AT&T Inc.	2.21
02 Apple Inc.	2.06
03 Exxon Mobil Corp.	1.92
04 Wells Fargo & Co.	1.89
05 JP Morgan Chase & Co.	1.79
06 Microsoft Corp.	1.28
07 Comcast Corp., Class A	1.20
08 Intel Corp.	1.20
09 Alphabet Inc.	1.06
10 Johnson & Johnson	0.92
11 Bank of America Corp.	0.86
12 Chevron Corp.	0.86
13 Cisco Systems Inc.	0.84
14 Pfizer Inc.	0.82
15 Wal-Mart Stores Inc.	0.81
16 Verizon Communications Inc.	0.71
17 Berkshire Hathaway Inc., Class B	0.70
18 Procter & Gamble Co.	0.68
19 Amazon.com Inc.	0.66
20 Citigroup Inc.	0.65
21 Facebook Inc.	0.60
22 The Walt Disney Co.	0.58
23 General Electric Co.	0.57
24 UnitedHealth Group Inc.	0.56
25 QUALCOMM Inc.	0.52
	<u>25.95</u>
Total Net Asset Value:	\$1,505,364,356

All holdings in the Fund are long positions.

The Fund's investment portfolio may change due to the Fund's ongoing portfolio transactions. Quarterly updates are available within 60 days of each quarter end where an annual or interim report is not published by visiting [www.ca.dimensionalfund.com](http://www.ca.dimensionalfund.com) or by calling Dimensional collect at 604-685-1633 or by writing to Dimensional at 745 Thurlow Street, Suite 2110, Vancouver, BC, Canada, V6E 0C5.

### Forward Looking Statements

In preparing this document, Dimensional is required to exercise some degree of prediction or projection. As a result, this document may contain forward-looking statements relating to anticipated future events, results, performance, decisions, circumstances, opportunities, risks or other matters. By their nature, these forward-looking statements require Dimensional to make assumptions and are subject to inherent risks and uncertainties. In particular, there is a risk that Dimensional's predictions and other forward-looking statements will not prove to be accurate. A number of factors could cause actual events, results, performance, etc. to differ materially from the targets, expectations, estimates, or intentions expressed or implied in the forward-looking statements. These factors could, among others, include market and general economic conditions, interest rates, regulatory and statutory developments, the effects of competition in the geographic and business area in which the Fund may invest, and the risks detailed from time to time in the Fund's simplified prospectus. For these reasons, it is important that readers do not place undue reliance on any forward-looking statements.