
DFA International Vector Equity Fund

Management Report of Fund Performance (Revised)

For the year ended December 31, 2016

The annual management report of fund performance contains financial highlights but does not contain the complete annual financial statements of the DFA International Vector Equity Fund (the “Fund” or “Portfolio”). You can get a copy of the annual financial statements at your request, and at no cost, by calling Dimensional Fund Advisors Canada ULC (“Dimensional”) collect at 604-685-1633, by writing to Dimensional at 745 Thurlow Street, Suite 2110, Vancouver, BC, Canada, V6E 0C5 or by visiting Dimensional’s website at www.ca.dimensional.com or SEDAR at www.sedar.com.

Unitholders may also contact Dimensional using one of these methods to request a copy of the Fund’s proxy voting policies and procedures, proxy voting disclosure record, or quarterly portfolio disclosure.

DFA International Vector Equity Fund

Management Report of Fund Performance

Investment Objective and Strategies

The DFA International Vector Equity Fund pursues long-term capital appreciation by investing primarily in equity securities of non-Canadian and non-U.S. companies.

The Fund will generally purchase a broad and diverse group of stocks of non-Canadian and non-U.S. operating companies associated with countries with developed and emerging markets, with an increased exposure to small capitalization and value companies as determined by Dimensional Fund Advisors LP (“Dimensional U.S.”) the Fund’s sub-advisor. The increased exposure to small capitalization and value companies may be achieved by decreasing or excluding the allocation of the Fund’s assets to the largest growth companies, which results in a greater weight allocation to small capitalization and value companies.

Generally, size is determined based upon market capitalization and value is assessed based on the stock’s market price relative to one or more fundamental characteristics. For example, Dimensional U.S. may consider a stock to be a value stock if the company has a high book value, earnings or cash flow relative to the market price of the company’s stock. Dimensional U.S. uses its discretion to determine the countries in which the Fund is authorized to invest and when and whether to invest in a country that has been authorized based on a number of factors.

Risk

There were no material changes to the Fund over the course of the year affecting the overall risk exposure. The Fund will continue to be fully exposed to foreign market risk, including emerging and developed markets risk as well as the risks associated with investments in small company stocks and value stocks, which may behave differently from conventional benchmarks such as the MSCI EAFE® plus Emerging Markets Index (CAD, net div.) (the “Index”). Currency movements had a negative effect on Class A, Class F and Class I units (the “unhedged classes”) of the Fund’s returns over the past year and currency risk will remain in the future on the unhedged classes of units. The Class A(H), Class F(H), and Class I(H) units (the “hedged classes”) of the Fund are suitable for investors who wish to reduce exposure to fluctuations in international currencies relative to the Canadian Dollar. The unhedged classes of the Fund are suitable for investors who wish to be exposed to fluctuations in international currencies relative to the Canadian Dollar. For a complete description of the hedged and unhedged classes, please refer to the simplified prospectus.

The Fund engaged in securities lending transactions and, as a result, is exposed to securities lending risk. Securities lending risk includes the risk that the value of collateral held by the Fund may be insufficient to fully replace loaned securities and the risk of defaults on the obligations to return the securities to the Fund. These risks may make an investment in the Fund riskier than if the Fund did not lend securities. Investors are encouraged to read the description of securities lending risk contained in the simplified prospectus.

The Fund will also continue to be exposed to the other risks described in the Fund’s simplified prospectus.

Results of Operations

The Fund held approximately 3,100 securities in 21 developed markets and approximately 1,600 securities in 19 emerging markets as at December 31, 2016. In general, cash exposure throughout the period was less than 1% of the Fund’s Net Asset Value. As a result of the Fund’s diversified investment approach, performance was determined principally by broad trends in the non-U.S. and non-Canadian international equity markets rather than the behavior of a limited number of stocks.

For the year ended December 31, 2016, the value of the Canadian Dollar appreciated against the currencies that the hedged classes of the fund hedge against and had a negative (positive) impact on unhedged (hedged), Canadian Dollar-denominated returns.

For the year ended December 31, 2016, total returns were 2.48% for the Class F units, 7.00% for the Class F(H) units, 1.30% for the Class A units, 5.85% for the Class A(H) units, 2.96% for the Class I units, 7.63% for the Class I(H) units, and -0.33% for the Index.

Each class of the Fund’s units outperformed the Index primarily due to the Fund’s greater emphasis on small cap stocks. Small cap stocks generally outperformed the overall Index, which consists mostly of mid-cap and large cap stocks. The Fund’s lower exposure than the Index to large cap growth stocks also benefited relative performance as these stocks underperformed the overall Index.

Each of the Fund’s hedged classes outperformed their corresponding unhedged classes as well as the Index due to the appreciation of the Canadian Dollar versus the currencies that the hedged classes hedge against.

All returns for the Index are unhedged and are not diminished by management and administrative expenses associated with managing a portfolio of securities.

Net returns of Class A and Class A (H) units were diminished by a trailer fee payable to securities dealers. Dealers generally pay a portion of these fees to investment professionals for services they provide to their clients.

Recent Developments

Dimensional will continue to pursue a disciplined quantitative approach to identify securities for purchase or sale. In contrast to many investment firms, Dimensional does not seek to predict the future course of business conditions, market trends, or interest rates. Dimensional believes that securities markets are highly competitive and prices reflect available information quickly enough that efforts to outperform the market ordinarily promise little or no payoff after taking account of research and transaction costs. Instead, Dimensional seeks to capture a market rate of return associated with various broad risk factors while reducing company or industry risk through diversification.

DFA International Vector Equity Fund

Management Report of Fund Performance

Related-Party Transactions

Dimensional is the manager, trustee, and principal portfolio advisor of the Fund. As manager, Dimensional is responsible for the overall management and administration of the Fund. As trustee, Dimensional holds legal title to the Fund's investments in trust for the Fund's unitholders. For its services, Dimensional receives management fees that are calculated as a percentage of the average Net Asset Value of the Fund. These fees are calculated daily and payable monthly.

As principal portfolio advisor, Dimensional is responsible for managing the investment portfolio of the Fund directly or through sub-advisors. Dimensional has retained its ultimate parent company, that Dimensional U.S., to act as the Fund's sub-advisor. Dimensional U.S. is responsible for investment analysis and decision making, implementing securities transactions, selecting broker-dealers, acquiring research information, voting proxies, and monitoring the Fund's investment guidelines. The fees of the sub-advisor are paid by Dimensional.

Dimensional has adopted written policies and procedures with respect to the supervision and monitoring of the services provided by Dimensional and Dimensional U.S. and received standing instructions from the Fund's Independent Review Committee ("IRC") to act in accordance with these policies and procedures. These standing instructions require Dimensional to report to the IRC any material exceptions to compliance with these policies and procedures.

DFA International Vector Equity Fund

Management Report of Fund Performance

Financial Highlights

The following tables show selected key financial information about the Fund and are intended to help you understand the Fund's financial performance for the past five years, as applicable. Per unit data is derived from the Fund's financial statements.

Ratios and supplemental data are derived from the Fund's Net Asset Value.

The Fund's Net Assets per Unit (\$) ⁽¹⁾

	CLASS A					CLASS A(H)				
	2016	2015	2014	2013	2012	2016	2015	2014	2013	2012
Net Assets, beginning of year	\$15.17	\$13.51	\$13.39	\$10.99	\$ 9.60	\$12.89	\$12.32	\$12.38	\$10.41	\$ 8.87
Increase (decrease) from operations:										
Total revenue	0.44	0.44	0.41	0.33	0.32	0.38	0.39	0.39	0.32	0.31
Total expenses	(0.26)	(0.28)	(0.27)	(0.23)	(0.20)	(0.22)	(0.22)	(0.27)	(0.22)	(0.19)
Realized gains (losses) for the year	0.06	0.19	0.36	0.12	(0.02)	0.31	(0.65)	0.67	(0.24)	0.29
Unrealized gains (losses) for the year	(0.21)	1.52	(0.24)	2.30	1.41	0.30	1.52	(0.31)	2.21	0.93
Total increase (decrease) from operations⁽²⁾	\$ 0.03	\$ 1.87	\$ 0.26	\$ 2.52	\$ 1.51	\$ 0.77	\$ 1.04	\$ 0.48	\$ 2.07	\$ 1.34
Distributions:										
From income (excluding dividends)	-	-	-	-	-	-	-	-	-	-
From dividends	(0.20)	(0.18)	(0.12)	(0.11)	(0.12)	(0.16)	(0.16)	(0.08)	(0.12)	(0.11)
From capital gains	-	-	-	-	-	-	-	(0.38)	-	-
Return of capital	-	-	-	-	-	-	-	-	-	-
Total Annual Distributions⁽³⁾	(0.20)	(0.18)	(0.12)	(0.11)	(0.12)	(0.16)	(0.16)	(0.46)	(0.12)	(0.11)
Net Assets, end of year	\$15.15	\$15.17	\$13.51	\$13.39	\$10.88	\$13.46	\$12.89	\$12.32	\$12.38	\$10.31
	CLASS F					CLASS F(H)				
	2016	2015	2014	2013	2012	2016	2015	2014	2013	2012
Net Assets, beginning of year	\$15.55	\$13.83	\$13.71	\$11.23	\$ 9.81	\$13.01	\$12.45	\$12.50	\$10.50	\$ 8.93
Increase (decrease) from operations:										
Total revenue	0.45	0.45	0.42	0.34	0.32	0.38	0.39	0.37	0.32	0.30
Total expenses	(0.10)	(0.11)	(0.11)	(0.09)	(0.08)	(0.08)	(0.10)	(0.10)	(0.09)	(0.08)
Realized gains (losses) for the year	0.10	0.21	0.36	0.12	(0.02)	0.33	(0.59)	0.73	(0.30)	0.33
Unrealized gains (losses) for the year	(0.07)	1.49	(0.32)	2.39	1.29	0.08	1.04	(0.43)	2.29	1.27
Total increase (decrease) from operations⁽²⁾	\$ 0.38	\$ 2.04	\$ 0.35	\$ 2.76	\$ 1.51	\$ 0.71	\$ 0.74	\$ 0.57	\$ 2.22	\$ 1.82
Distributions:										
From income (excluding dividends)	-	-	-	-	-	-	-	-	-	-
From dividends	(0.36)	(0.34)	(0.28)	(0.25)	(0.24)	(0.31)	(0.29)	(0.25)	(0.23)	(0.21)
From capital gains	-	-	-	-	-	-	-	(0.37)	-	-
Return of capital	-	-	-	-	-	-	-	-	-	-
Total Annual Distributions⁽³⁾	(0.36)	(0.34)	(0.28)	(0.25)	(0.24)	(0.31)	(0.29)	(0.62)	(0.23)	(0.21)
Net Assets, end of year	\$15.54	\$15.55	\$13.83	\$13.71	\$11.12	\$13.58	\$13.01	\$12.45	\$12.50	\$10.39
	CLASS I					CLASS I(H)				
	2016	2015	2014	2013	2012	2016	2015	2014	2013	2012 ⁽⁴⁾
Net Assets, beginning of year	\$14.36	\$12.77	\$12.65	\$10.36	\$ 9.04	\$12.93	\$12.38	\$12.44	\$10.44	\$10.00
Increase (decrease) from operations:										
Total revenue	0.41	0.41	0.38	0.32	0.29	0.37	0.39	0.35	0.32	0.25
Total expenses	(0.02)	(0.02)	(0.03)	(0.02)	(0.02)	(0.02)	(0.02)	(0.03)	(0.03)	(0.02)
Realized gains (losses) for the year	0.13	0.22	0.33	0.11	(0.02)	0.46	(0.60)	0.77	(0.29)	0.09
Unrealized gains (losses) for the year	0.05	1.26	(0.37)	2.21	1.27	0.37	1.03	(0.42)	2.30	0.93
Total increase (decrease) from operations⁽²⁾	\$ 0.57	\$ 1.87	\$ 0.31	\$ 2.62	\$ 1.52	\$ 1.18	\$ 0.80	\$ 0.67	\$ 2.30	\$ 1.25
Distributions:										
From income (excluding dividends)	-	-	-	-	-	-	-	-	-	-
From dividends	(0.41)	(0.39)	(0.33)	(0.28)	(0.27)	(0.37)	(0.36)	(0.31)	(0.28)	(0.27)
From capital gains	-	-	-	-	-	-	-	(0.38)	-	-
Return of capital	-	-	-	-	-	-	-	-	-	-
Total Annual Distributions⁽³⁾	(0.41)	(0.39)	(0.33)	(0.28)	(0.27)	(0.37)	(0.36)	(0.69)	(0.28)	(0.27)
Net Assets, end of year	\$14.34	\$14.36	\$12.77	\$12.65	\$10.26	\$13.50	\$12.93	\$12.38	\$12.44	\$10.33

⁽¹⁾ This information is derived from the Fund's audited annual financial statements and the Fund's unaudited semi-annual financial statements. For the financial years beginning on or after January 1, 2014, the financial highlights were derived from the Fund's financial statements prepared in accordance with International Financial Reporting Standards ("IFRS"). For the financial year ended December 31, 2013, the financial highlights were restated to comply with IFRS reporting. For financial years beginning before January 1, 2013, the financial highlights were derived from the Fund's financial statements prepared in accordance with Canadian GAAP. For financial years beginning on or after January 1, 2013, all references to "Net Assets" or "Net Assets per Unit" in the financial highlights are references to net assets attributable to holders of redeemable units determined in accordance with IFRS as presented in the financial statements of the Fund.

⁽²⁾ Net Assets and distributions are based on the actual number of units outstanding at the relevant time. The increase/decrease from operations is based on the weighted average number of units outstanding over the financial year.

⁽³⁾ Distributions were paid in cash/reinvested in additional units of the Fund, or both.

⁽⁴⁾ The Class I(H) units of this Fund were first issued on February 14, 2012.

DFA International Vector Equity Fund
Management Report of Fund Performance

Ratios and Supplemental Data

	CLASS A					CLASS A(H)				
	Dec 31, 2016	Dec 31, 2015	Dec 31, 2014	Dec 31, 2013	Dec 31, 2012	Dec 31, 2016	Dec 31, 2015	Dec 31, 2014	Dec 31, 2013	Dec 31, 2012
Total net asset value (\$) (000's) ⁽¹⁾	14,523	16,528	15,881	17,829	19,404	2,882	2,748	3,424	3,956	3,216
Number of units outstanding (000's) ⁽¹⁾	959	1,089	1,175	1,331	1,766	214	213	278	320	309
Management expense ratio ⁽²⁾	1.77%	1.82%	1.88%	1.87%	1.94%	1.78%	1.60%	2.08%	1.87%	1.96%
Management expense ratio before waivers or absorption ⁽²⁾	1.77%	1.82%	1.88%	1.87%	1.94%	1.78%	1.60%	2.08%	1.87%	1.96%
Trading expense ratio ⁽³⁾	0.04%	0.03%	0.06%	0.02%	0.02%	0.04%	0.03%	0.06%	0.02%	0.02%
Portfolio turnover rate ⁽⁴⁾	11.73%	8.68%	13.12%	3.12%	1.67%	11.73%	8.68%	13.12%	3.12%	1.67%
Net asset value per unit (\$)	15.15	15.17	13.51	13.39	10.99	13.46	12.89	12.32	12.38	10.41

	CLASS F					CLASS F(H)				
	Dec 31, 2016	Dec 31, 2015	Dec 31, 2014	Dec 31, 2013	Dec 31, 2012	Dec 31, 2016	Dec 31, 2015	Dec 31, 2014	Dec 31, 2013	Dec 31, 2012
Total Net Asset Value (\$) (000's) ⁽¹⁾	271,774	263,855	228,644	208,940	152,795	47,832	52,450	41,948	29,067	15,921
Number of units outstanding (000's) ⁽¹⁾	17,493	16,965	16,530	15,242	13,608	3,522	4,032	3,368	2,325	1,517
Management expense ratio ⁽²⁾	0.61%	0.67%	0.73%	0.72%	0.74%	0.64%	0.70%	0.76%	0.74%	0.79%
Management expense ratio before waivers or absorption ⁽²⁾	0.61%	0.67%	0.73%	0.72%	0.74%	0.64%	0.70%	0.76%	0.74%	0.79%
Trading expense ratio ⁽³⁾	0.04%	0.03%	0.06%	0.02%	0.02%	0.04%	0.03%	0.06%	0.02%	0.02%
Portfolio turnover rate ⁽⁴⁾	11.73%	8.68%	13.12%	3.12%	1.67%	11.73%	8.68%	13.12%	3.12%	1.67%
Net asset value per unit (\$)	15.54	15.55	13.83	13.71	11.23	13.58	13.01	12.45	12.50	10.50

	CLASS I					CLASS I(H)				
	Dec 31, 2016	Dec 31, 2015	Dec 31, 2014	Dec 31, 2013	Dec 31, 2012	Dec 31, 2016	Dec 31, 2015	Dec 31, 2014	Dec 31, 2013	Dec 31, 2012 ⁽⁶⁾
Total Net Asset Value (\$) (000's) ⁽¹⁾	233,140	190,053	138,606	101,261	59,691	59,204	43,071	35,744	17,955	9,015
Number of units outstanding (000's) ⁽¹⁾	16,261	13,239	10,855	8,002	5,762	4,385	3,330	2,887	1,443	864
Management expense ratio ⁽²⁾	0.08%	0.14%	0.20%	0.18%	0.18%	0.10%	0.15%	0.21%	0.20%	0.21% ⁽⁵⁾
Management expense ratio before waivers or absorption ⁽²⁾	0.08%	0.14%	0.20%	0.18%	0.18%	0.10%	0.15%	0.21%	0.20%	0.21% ⁽⁵⁾
Trading expense ratio ⁽³⁾	0.04%	0.03%	0.06%	0.02%	0.02%	0.04%	0.03%	0.06%	0.02%	0.02% ⁽⁵⁾
Portfolio turnover rate ⁽⁴⁾	11.73%	8.68%	13.12%	3.12%	1.67%	11.73%	8.68%	13.12%	3.12%	1.67%
Net asset value per unit (\$)	14.34	14.36	12.77	12.65	10.36	13.50	12.93	12.38	12.44	10.44

⁽¹⁾ This information is derived from the Fund's audited annual financial statements and the Fund's unaudited semi-annual financial statements. For the financial years beginning on or after January 1, 2014, the financial highlights were derived from the Fund's financial statements prepared in accordance with IFRS. For the financial year ended December 31, 2013, the financial highlights were restated to comply with IFRS reporting. For financial years beginning before January 1, 2013, the financial highlights were derived from the Fund's financial statements prepared in accordance with Canadian GAAP. For financial years beginning on or after January 1, 2013, all references to "Net Assets" or "Net Assets per Unit" in the financial highlights are references to net assets attributable to holders of redeemable units determined in accordance with IFRS as presented in the financial statements of the Fund.

⁽²⁾ Management expense ratio is based on total expenses (excluding broker commissions and other portfolio transaction costs) for the stated year and is expressed as an annualized percentage of daily average Net Asset Value during the year.

⁽³⁾ The trading expense ratio represents total commissions and other portfolio transaction costs expressed as an annualized percentage of daily average Net Asset Value during the year.

⁽⁴⁾ The Fund's portfolio turnover rate indicates how actively the Fund's portfolio advisor manages its portfolio investments. A portfolio turnover rate of 100% is equivalent to the Fund buying and selling all of the securities in its portfolio once in the course of the year. The higher a Fund's portfolio turnover in a year, the greater the trading costs payable by the Fund in the year, and the greater the chance of an investor receiving taxable capital gains in the year. There is not necessarily a relationship between a high turnover rate and the performance of the Fund.

⁽⁵⁾ Percentages are annualized.

⁽⁶⁾ The Class I(H) units of this Fund were first issued on February 14, 2012.

DFA International Vector Equity Fund

Management Report of Fund Performance

Management Fees

Dimensional receives management fees for its service as manager of the Fund. These fees are calculated as a percentage of the Net Asset Value of the Fund and are calculated daily and payable monthly. The table below shows the annual management fee rates for each class of units of the Fund.

Annual Rate	Class A	Class F	Class I
Management Fees	1.45%	0.45%	0%

Annual Rate	Class A(H)	Class F(H)	Class I(H)
Management Fees	1.45%	0.45%	0%

Dimensional pays a trailer fee to dealers out of the management fee received for Class A units of the Fund. This trailer fee is generally calculated as a percentage of the average daily Net Asset Value of Class A units of the Fund held by the dealer's clients or by the dealer on behalf of the clients. The maximum annual trailer fee for the Class A units of the Fund is 1.00%. The balance of the management fees are for the general management and administrative services provided to the Fund. The table below shows a breakdown of the services received by the Fund as a percentage of management fees.

	Class A	Class F	Class I
Management and Administrative Services	31%	100%	0%
Trailer Fees	69%	0%	0%
	100%	100%	0%

	Class A(H)	Class F(H)	Class I(H)
Management and Administrative Services	31%	100%	0%
Trailer Fees	69%	0%	0%
	100%	100%	0%

No management fees are charged to the Fund with respect to Class I and Class I (H) units. Instead, each Class I and Class I (H) investor pays a separate fee directly to the manager of the Fund.

Past Performance

On November 17, 2009, the DFA International Small Cap Fund merged into the DFA International Vector Equity Fund (formerly, the DFA International Value Fund). In connection with the merger, the investment objectives and strategies of the DFA International Vector Equity Fund were changed to allow the fund to purchase a broad portfolio of securities of non-Canadian and non-U.S. companies with an emphasis on small and value companies. Additionally, the DFA International Vector Equity Fund also began purchasing securities of companies from emerging markets as well as from developed markets. The changes to the fund's investment objectives and

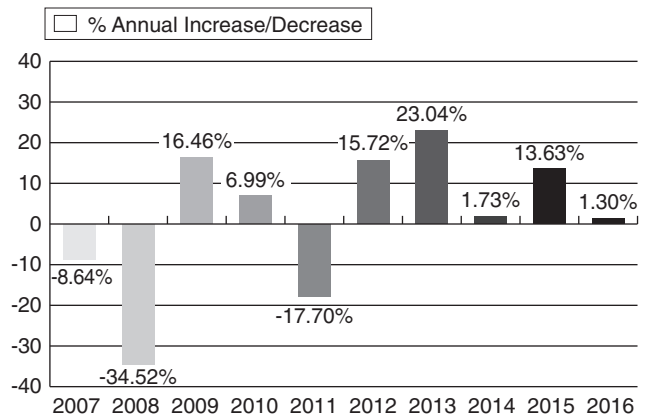
strategies could have affected the performance of the fund, had they been in effect throughout the performance measurement periods presented.

The performance information shown assumes that all distributions made by the Fund during the periods shown were reinvested in additional units of the Fund. The performance information does not take into account any sales, redemption, distribution, or other optional charges that would have reduced returns or performance. How the Fund has performed in the past does not necessarily indicate how it will perform in the future.

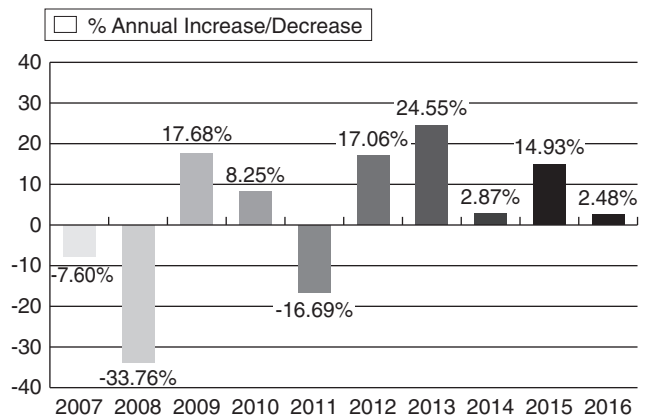
Year-by-Year Returns

The bar charts show the Fund's annual performance for each of the financial years shown, and how the Fund's performance has changed from year to year. The charts show, in percentage terms, how much an investment made on the first day of each financial year would have increased or decreased by the last day of that financial year.

DFA International Vector Equity Fund – Class A



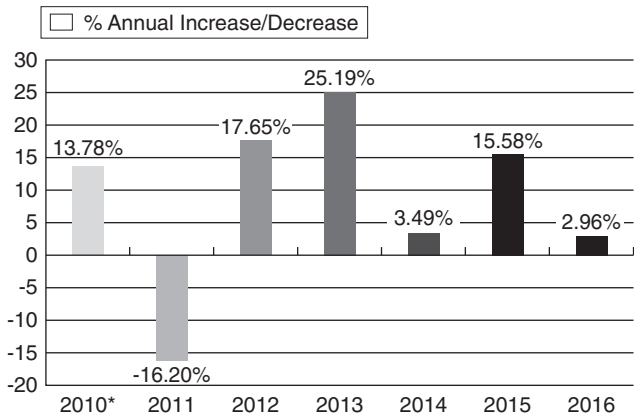
DFA International Vector Equity Fund – Class F



DFA International Vector Equity Fund

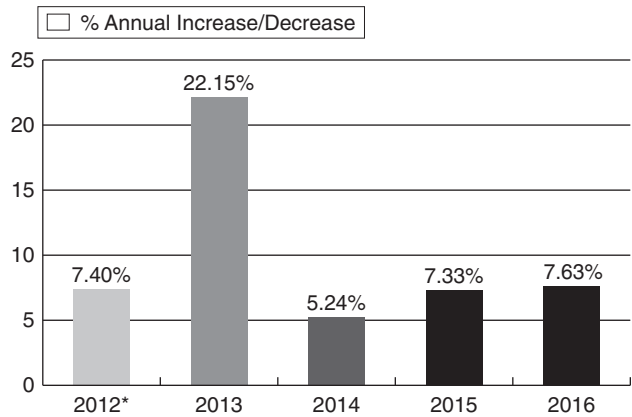
Management Report of Fund Performance

DFA International Vector Equity Fund – Class I



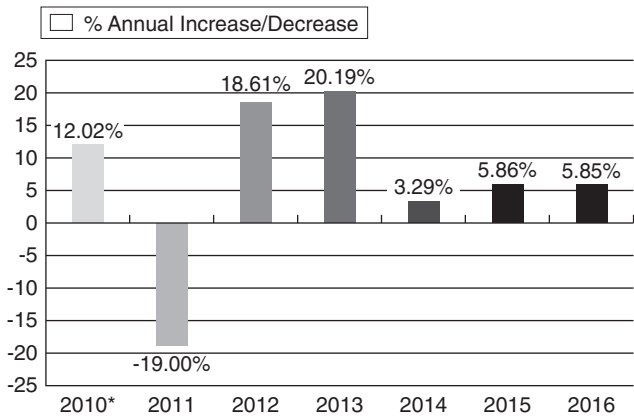
* The information presented for 2010 is for the period from May 5, 2010 to December 31, 2010.

DFA International Vector Equity Fund – Class I(H)



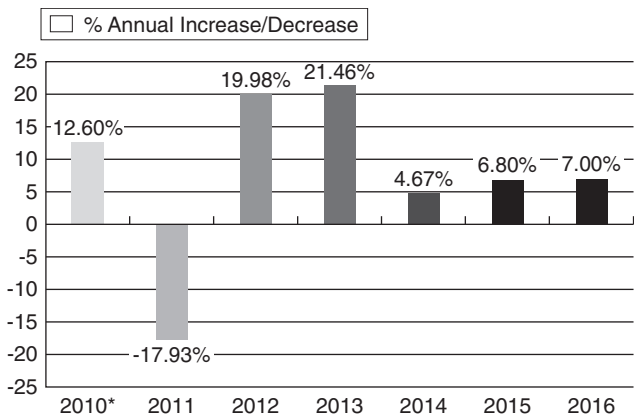
* The information presented for 2012 is for the period from February 14, 2012 to December 31, 2012.

DFA International Vector Equity Fund – Class A(H)



* The information presented for 2010 is for the period from July 26, 2010 to December 31, 2010.

DFA International Vector Equity Fund – Class F(H)



* The information presented for 2010 is for the period from July 26, 2010 to December 31, 2010.

Annual Compound Returns

The following table compares the Fund's historical annual compound returns for the periods shown ending on December 31, 2016. The historical annual compound total returns are also compared to the Index and benchmark.

Index returns are calculated in Canadian Dollars on a total return basis; that is, all distributions are reinvested. The Index is comprised of a sample of international companies in Europe, Australia, Latin America, Africa, and the Far East. Results for the Index and benchmark are not diminished by management fees, administrative expenses or taxes associated with managing a portfolio of securities.

Percentage Return:

	1-Year	3-Year	5-Year	10-Year
DFA International Vector Equity Fund – Class A	1.30%	5.40%	10.76%	0.23%
MSCI EAFE plus Emerging Markets Index (net div., CAD)	-0.33%	6.12%	11.22%	2.31%

Percentage Return:

	1-Year	3-Year	5-Year	10-Year
DFA International Vector Equity Fund – Class F	2.48%	6.61%	12.05%	1.38%
MSCI EAFE plus Emerging Markets Index (net div., CAD)	-0.33%	6.12%	11.22%	2.31%

DFA International Vector Equity Fund

Management Report of Fund Performance

Percentage Return:

	1-Year	3-Year	5-Year	10-Year	Since Inception
DFA International Vector Equity Fund – Class I	2.96%	7.19%	12.65%		8.57%
MSCI EAFE plus Emerging Markets Index (net div., CAD)	-0.33%	6.12%	11.22%		7.94%

Percentage Return:

	1-Year	3-Year	5-Year	10-Year	Since Inception
DFA International Vector Equity Fund – Class A(H)	5.85%	4.99%	10.53%		6.47%
MSCI EAFE plus Emerging Markets Index (net div., CAD)	-0.33%	6.12%	11.22%		8.25%

Percentage Return:

	1-Year	3-Year	5-Year	10-Year	Since Inception
DFA International Vector Equity Fund – Class F(H)	7.00%	6.15%	11.75%		7.68%
MSCI EAFE plus Emerging Markets Index (net div., CAD)	-0.33%	6.12%	11.22%		8.25%

Percentage Return:

	1-Year	3-Year	5-Year	10-Year	Since Inception
DFA International Vector Equity Fund – Class I(H)	7.63%	6.73%			10.04%
MSCI EAFE plus Emerging Markets Index (net div., CAD)	-0.33%	6.12%			9.65%

Summary of Investment Portfolio

as at December 31, 2016

Country Mix	% of Fund's Net Asset Value
Australia	5.02
Austria	0.49
Belgium	0.95
Brazil	1.99
Chile	0.35
China	7.15
Colombia	0.08
Czech Republic	0.07
Denmark	1.22
Finland	1.44
France	6.14
Germany	6.08
Great Britain	13.53
Greece	0.05
Hong Kong	2.19
Hungary	0.11
India	3.01
Indonesia	0.68
Ireland	0.55
Israel	0.45
Italy	2.17
Japan	18.93
Malaysia	0.65
Mexico	0.96
Netherlands	2.00
New Zealand	0.32
Norway	0.82
Philippine	0.30
Poland	0.43
Portugal	0.19
Russia	0.25
Singapore	0.92
South Africa	2.27
South Korea	4.00
Spain	2.07
Sweden	2.22
Switzerland	4.68
Taiwan	3.87
Thailand	0.67
Turkey	0.31
Cash and Cash Equivalents	0.30
Currency Forwards*	0.02
Net Other Assets	0.10
	<u>100.00</u>

* Currency Forwards are hedged against Classes A(H), F(H) and I(H) of the Fund.

DFA International Vector Equity Fund

Management Report of Fund Performance

Top 25 Issuers	% of Fund's Net Asset Value
01 Royal Dutch Shell PLC	1.27
02 BP PLC	0.95
03 HSBC Holdings PLC	0.72
04 Total SA	0.72
05 Samsung Electronics Co. Ltd.	0.60
06 Daimler AG	0.59
07 Toyota Motor Corp.	0.58
08 China Construction Bank Corp., Class H	0.53
09 Banco Santander SA	0.48
10 Nestle SA	0.45
11 Novartis AG	0.44
12 Vodafone Group PLC	0.42
13 BHP Billiton Ltd.	0.41
14 Mitsubishi UFJ Financial Group Inc.	0.37
15 BNP Paribas	0.37
16 Allianz SE	0.35
17 BASF SE	0.34
18 Australia & New Zealand Banking Group Ltd.	0.34
19 Industrial & Commercial Bank of China, Class H	0.32
20 Bayerische Motoren Werke AG	0.31
21 Volkswagen AG	0.29
22 Assicurazioni Generali SpA	0.29
23 Honda Motor Co. Ltd.	0.28
24 Glencore Xstrata PLC	0.26
25 Siemens AG	0.26
	<u>11.94</u>
Total Net Asset Value:	\$629,354,733

All holdings in the Fund are long positions.

The Fund's investment portfolio may change due to the Fund's ongoing portfolio transactions. Quarterly updates are available within 60 days of each quarter end where an annual or interim report is not published by visiting www.ca.dimensionalfund.com or by calling Dimensional collect at 604-685-1633 or by writing to Dimensional at 745 Thurlow Street, Suite 2110, Vancouver, BC, Canada, V6E 0C5.

Forward Looking Statements

In preparing this document, Dimensional is required to exercise some degree of prediction or projection. As a result, this document may contain forward-looking statements relating to anticipated future events, results, performance, decisions, circumstances, opportunities, risks or other matters. By their nature, these forward-looking statements require Dimensional to make assumptions and are subject to inherent risks and uncertainties. In particular, there is a risk that Dimensional's predictions and other forward-looking statements will not prove to be accurate. A number of factors could cause actual events, results, performance, etc. to differ materially from the targets, expectations, estimates, or intentions expressed or implied in the forward-looking statements. These factors could, among others, include market and general economic conditions, interest rates, regulatory and statutory developments, the effects of competition in the geographic and business area in which the Fund may invest, and the risks detailed from time to time in the Fund's simplified prospectus. For these reasons, it is important that readers do not place undue reliance on any forward-looking statements.