
DFA International Vector Equity Fund

Management Report of Fund Performance

For the period ended June 30, 2017

The interim management report of fund performance contains financial highlights but does not contain either the interim financial statements or annual financial statements of the DFA International Vector Equity Fund (the “Fund” or “Portfolio”). You can get a copy of the interim financial statements or annual financial statements at your request, and at no cost, by calling Dimensional Fund Advisors Canada ULC (“Dimensional”) collect at 604-685-1633, by writing to Dimensional at 745 Thurlow Street, Suite 2110, Vancouver, BC, Canada, V6E 0C5 or by visiting Dimensional’s website at ca.dimensional.com or SEDAR at www.sedar.com.

Unitholders may also contact Dimensional using one of these methods to request a copy of the Fund’s proxy voting policies and procedures, proxy voting disclosure record, or quarterly portfolio disclosure.

DFA International Vector Equity Fund

Management Report of Fund Performance

Results of Operations

The Fund held more than 3,100 securities in 22 developed markets and more than 1,700 securities in 19 emerging markets as at June 30, 2017. In general, cash exposure was low throughout the period with an average cash balance of less than 1% of the Fund's Net Asset Value. As a result of the Fund's investment strategy, performance was determined principally by broad structural trends in the non-U.S. and non-Canadian international equity markets rather than the behavior of a limited number of stocks.

For the six months ended June 30, 2017, the value of the Canadian dollar depreciated against most of the local currencies of the Fund's holdings, producing a positive impact on unhedged Canadian dollar-denominated returns. The returns of the Fund's hedged units were negatively impacted by the depreciation of the Canadian dollar.

For the six months ended June 30, 2017, total returns were +12.25% for the Class F units, +11.04% for the Class F(H) units, +11.60% for the Class A units, +10.35% for the Class A(H) units, +12.55% for the Class I units, +11.29% for the Class I(H) units, and +11.31% for the MSCI EAFE® plus Emerging Markets Index (net dividends) ("Index").

Each unhedged class of the Fund's units outperformed the Index. Differences in the valuation timing and methodology between the Fund and the Index contributed positively to the Fund's relative performance. The Fund prices foreign exchange rates at the closing of the Canadian markets while the Index uses rates at 4 p.m. London time. The Fund also may use fair value pricing to price certain portfolio securities at the closing of the Canadian markets while the Index uses local market closing prices. The Fund's greater emphasis on small and mid cap securities in developed ex North America markets also contributed positively to relative performance, as these securities outperformed for the period.

Each of the Fund's hedged classes underperformed their corresponding unhedged classes as well as the Index due to the overall depreciation of the Canadian Dollar versus the currencies that the hedged classes hedge against.

All returns for the Index are unhedged and are not diminished by management and administrative expenses associated with managing a portfolio of securities.

Net returns of Class A and Class A(H) units were diminished by a trailer fee payable to securities dealers. Dealers generally pay a portion of these fees to investment professionals for services they provide to their clients.

Recent Developments

Dimensional will continue to pursue a disciplined quantitative approach to identify securities for purchase or sale. In contrast to many investment firms, Dimensional does not seek to predict the future course of business conditions, market trends, or interest rates. Dimensional believes that securities markets are highly competitive and prices reflect available information quickly enough that efforts to outperform the market ordinarily promise little or no payoff after taking account of research and transaction costs. Instead, Dimensional seeks to capture a market rate of return associated with various broad risk factors while reducing company or industry risk through diversification.

Douglas W. Diamond was appointed to the Independent Review Committee for the Funds effective June 22, 2017.

Related-Party Transactions

Dimensional is the manager, trustee, and principal portfolio advisor of the Fund. As manager, Dimensional is responsible for the overall management and administration of the Fund. As trustee, Dimensional holds legal title to the Fund's investments in trust for the Fund's unitholders. For its services, Dimensional receives management fees that are calculated as a percentage of the average Net Asset Value of the Fund. These fees are calculated daily and payable monthly.

As principal portfolio advisor, Dimensional is responsible for managing the investment portfolio of the Fund directly or through sub-advisors. Dimensional has retained its ultimate parent company, that Dimensional Fund Advisors LP ("Dimensional U.S."), to act as the Fund's sub-advisor. Dimensional U.S. is responsible for investment analysis and decision making, implementing securities transactions, selecting broker-dealers, acquiring research information, voting proxies, and monitoring the Fund's investment guidelines. The fees of the sub-advisor are paid by Dimensional.

Dimensional has adopted written policies and procedures with respect to the supervision and monitoring of the services provided by Dimensional and Dimensional U.S. and received standing instructions from the Fund's Independent Review Committee ("IRC") to act in accordance with these policies and procedures. These standing instructions require Dimensional to report to the IRC any material exceptions to compliance with these policies and procedures.

DFA International Vector Equity Fund

Management Report of Fund Performance

Financial Highlights

The following tables show selected key financial information about the Fund and are intended to help you understand the Fund's financial performance for the six months ended June 30, 2017 and from the past five years, as applicable. Per unit data is derived from the Fund's financial statements.

Ratios and supplemental data are derived from the Fund's Net Asset Value.

The Fund's Net Assets per Unit (\$) ⁽¹⁾

	CLASS A						CLASS A(H)					
	2017	2016	2015	2014	2013	2012	2017	2016	2015	2014	2013	2012
Net Assets, beginning of period	\$ 15.15	\$ 15.17	\$ 13.51	\$ 13.39	\$ 10.99	\$ 9.60	\$ 13.46	\$ 12.89	\$ 12.32	\$ 12.38	\$ 10.41	\$ 8.87
Increase (decrease) from operations:												
Total revenue	0.29	0.44	0.44	0.41	0.33	0.32	0.25	0.38	0.39	0.39	0.32	0.31
Total expenses	(0.15)	(0.26)	(0.28)	(0.27)	(0.23)	(0.20)	(0.13)	(0.22)	(0.22)	(0.27)	(0.22)	(0.19)
Realized gains (losses) for the period	–	0.06	0.19	0.36	0.12	(0.02)	(0.46)	0.31	(0.65)	0.67	(0.24)	0.29
Unrealized gains (losses) for the period	1.63	(0.21)	1.52	(0.24)	2.30	1.41	1.73	0.30	1.52	(0.31)	2.21	0.93
Total increase (decrease) from operations⁽²⁾	\$ 1.77	\$ 0.03	\$ 1.87	\$ 0.26	\$ 2.52	\$ 1.51	\$ 1.39	\$ 0.77	\$ 1.04	\$ 0.48	\$ 2.07	\$ 1.34
Distributions:												
From income (excluding dividends)	–	–	–	–	–	–	–	–	–	–	–	–
From dividends	(0.12)	(0.20)	(0.18)	(0.12)	(0.11)	(0.12)	(0.10)	(0.16)	(0.16)	(0.08)	(0.12)	(0.11)
From capital gains	–	–	–	–	–	–	–	–	–	(0.38)	–	–
Return of capital	–	–	–	–	–	–	–	–	–	–	–	–
Total Annual Distributions⁽³⁾	(0.12)	(0.20)	(0.18)	(0.12)	(0.11)	(0.12)	(0.10)	(0.16)	(0.16)	(0.46)	(0.12)	(0.11)
Net Assets, end of period	\$ 16.79	\$ 15.15	\$ 15.17	\$ 13.51	\$ 13.39	\$ 10.88	\$ 14.75	\$ 13.46	\$ 12.89	\$ 12.32	\$ 12.38	\$ 10.31
	CLASS F						CLASS F(H)					
	2017	2016	2015	2014	2013	2012	2017	2016	2015	2014	2013	2012
Net Assets, beginning of period	\$ 15.54	\$ 15.55	\$ 13.83	\$ 13.71	\$ 11.23	\$ 9.81	\$ 13.58	\$ 13.01	\$ 12.45	\$ 12.50	\$ 10.50	\$ 8.93
Increase (decrease) from operations:												
Total revenue	0.29	0.45	0.45	0.42	0.34	0.32	0.25	0.38	0.39	0.37	0.32	0.30
Total expenses	(0.05)	(0.10)	(0.11)	(0.11)	(0.09)	(0.08)	(0.05)	(0.08)	(0.10)	(0.10)	(0.09)	(0.08)
Realized gains (losses) for the period	–	0.10	0.21	0.36	0.12	(0.02)	(0.45)	0.33	(0.59)	0.73	(0.30)	0.33
Unrealized gains (losses) for the period	1.69	(0.07)	1.49	(0.32)	2.39	1.29	1.70	0.08	1.04	(0.43)	2.29	1.27
Total increase (decrease) from operations⁽²⁾	\$ 1.93	\$ 0.38	\$ 2.04	\$ 0.35	\$ 2.76	\$ 1.51	\$ 1.45	\$ 0.71	\$ 0.74	\$ 0.57	\$ 2.22	\$ 1.82
Distributions:												
From income (excluding dividends)	–	–	–	–	–	–	–	–	–	–	–	–
From dividends	(0.19)	(0.36)	(0.34)	(0.28)	(0.25)	(0.24)	(0.16)	(0.31)	(0.29)	(0.25)	(0.23)	(0.21)
From capital gains	–	–	–	–	–	–	–	–	–	(0.37)	–	–
Return of capital	–	–	–	–	–	–	–	–	–	–	–	–
Total Annual Distributions⁽³⁾	(0.19)	(0.36)	(0.34)	(0.28)	(0.25)	(0.24)	(0.16)	(0.31)	(0.29)	(0.62)	(0.23)	(0.21)
Net Assets, end of period	\$ 17.26	\$ 15.54	\$ 15.55	\$ 13.83	\$ 13.71	\$ 11.12	\$ 14.92	\$ 13.58	\$ 13.01	\$ 12.45	\$ 12.50	\$ 10.39
	CLASS I						CLASS I(H)					
	2017	2016	2015	2014	2013	2012	2017	2016	2015	2014	2013	2012 ⁽⁴⁾
Net Assets, beginning of period	\$ 14.34	\$ 14.36	\$ 12.77	\$ 12.65	\$ 10.36	\$ 9.04	\$ 13.50	\$ 12.93	\$ 12.38	\$ 12.44	\$ 10.44	\$ 10.00
Increase (decrease) from operations:												
Total revenue	0.28	0.41	0.41	0.38	0.32	0.29	0.25	0.37	0.39	0.35	0.32	0.25
Total expenses	(0.01)	(0.02)	(0.02)	(0.03)	(0.02)	(0.02)	(0.01)	(0.02)	(0.02)	(0.03)	(0.03)	(0.02)
Realized gains (losses) for the period	–	0.13	0.22	0.33	0.11	(0.02)	(0.47)	0.46	(0.60)	0.77	(0.29)	0.09
Unrealized gains (losses) for the period	1.53	0.05	1.26	(0.37)	2.21	1.27	1.72	0.37	1.03	(0.42)	2.30	0.93
Total increase (decrease) from operations⁽²⁾	\$ 1.80	\$ 0.57	\$ 1.87	\$ 0.31	\$ 2.62	\$ 1.52	\$ 1.49	\$ 1.18	\$ 0.80	\$ 0.67	\$ 2.30	\$ 1.25
Distributions:												
From income (excluding dividends)	–	–	–	–	–	–	–	–	–	–	–	–
From dividends	(0.21)	(0.41)	(0.39)	(0.33)	(0.28)	(0.27)	(0.19)	(0.37)	(0.36)	(0.31)	(0.28)	(0.27)
From capital gains	–	–	–	–	–	–	–	–	–	(0.38)	–	–
Return of capital	–	–	–	–	–	–	–	–	–	–	–	–
Total Annual Distributions⁽³⁾	(0.21)	(0.41)	(0.39)	(0.33)	(0.28)	(0.27)	(0.19)	(0.37)	(0.36)	(0.69)	(0.28)	(0.27)
Net Assets, end of period	\$ 15.93	\$ 14.34	\$ 14.36	\$ 12.77	\$ 12.65	\$ 10.26	\$ 14.83	\$ 13.50	\$ 12.93	\$ 12.38	\$ 12.44	\$ 10.33

⁽¹⁾ This information is derived from the Fund's audited annual financial statements and the Fund's unaudited semi-annual financial statements. For the financial years beginning on or after January 1, 2014, the financial highlights were derived from the Fund's financial statements prepared in accordance with International Financial Reporting Standards ("IFRS"). For the financial year ended December 31, 2013, the financial highlights were restated to comply with IFRS reporting. For financial years beginning before January 1, 2013, the financial highlights were derived from the Fund's financial statements prepared in accordance with Canadian GAAP. For financial years beginning on or after January 1, 2013, all references to "Net Assets" or "Net Assets per Unit" in the financial highlights are references to net assets attributable to holders of redeemable units determined in accordance with IFRS as presented in the financial statements of the Fund.

⁽²⁾ Net Assets and distributions are based on the actual number of units outstanding at the relevant time. The increase/decrease from operations is based on the weighted average number of units outstanding over the financial period.

⁽³⁾ Distributions were paid in cash/reinvested in additional units of the Fund, or both.

⁽⁴⁾ The Class I(H) units of this Fund were first issued on February 13, 2012.

DFA International Vector Equity Fund
Management Report of Fund Performance

Ratios and Supplemental Data

	CLASS A						CLASS A(H)					
	June 30, 2017	Dec 31, 2016	Dec 31, 2015	Dec 31, 2014	Dec 31, 2013	Dec 31, 2012	June 30, 2017	Dec 31, 2016	Dec 31, 2015	Dec 31, 2014	Dec 31, 2013	Dec 31, 2012
Total net asset value (\$) (000's) ⁽¹⁾	15,720	14,523	16,528	15,881	17,829	19,404	3,181	2,882	2,748	3,424	3,956	3,216
Number of units outstanding (000's) ⁽¹⁾	936	959	1,089	1,175	1,331	1,766	216	214	213	278	320	309
Management expense ratio ⁽²⁾	1.76% ⁽⁵⁾	1.77%	1.82%	1.88%	1.87%	1.94%	1.77% ⁽⁵⁾	1.78%	1.60%	2.08%	1.87%	1.96%
Management expense ratio before waivers or absorption ⁽²⁾	1.76% ⁽⁵⁾	1.77%	1.82%	1.88%	1.87%	1.94%	1.77% ⁽⁵⁾	1.78%	1.60%	2.08%	1.87%	1.96%
Trading expense ratio ⁽³⁾	0.01% ⁽⁵⁾	0.04%	0.03%	0.06%	0.02%	0.02%	0.01% ⁽⁵⁾	0.04%	0.03%	0.06%	0.02%	0.02%
Portfolio turnover rate ⁽⁴⁾	4.18%	11.73%	8.68%	13.12%	3.12%	1.67%	4.18%	11.73%	8.68%	13.12%	3.12%	1.67%
Net asset value per unit (\$)	16.79	15.15	15.17	13.51	13.39	10.99	14.75	13.46	12.89	12.32	12.38	10.41

	CLASS F						CLASS F(H)					
	June 30, 2017	Dec 31, 2016	Dec 31, 2015	Dec 31, 2014	Dec 31, 2013	Dec 31, 2012	June 30, 2017	Dec 31, 2016	Dec 31, 2015	Dec 31, 2014	Dec 31, 2013	Dec 31, 2012
Total Net Asset Value (\$) (000's) ⁽¹⁾	290,967	271,774	263,855	228,644	208,940	152,795	59,718	47,832	52,450	41,948	29,067	15,921
Number of units outstanding (000's) ⁽¹⁾	16,860	17,493	16,965	16,530	15,242	13,608	4,004	3,522	4,032	3,368	2,325	1,517
Management expense ratio ⁽²⁾	0.61% ⁽⁵⁾	0.61%	0.67%	0.73%	0.72%	0.74%	0.62% ⁽⁵⁾	0.64%	0.70%	0.76%	0.74%	0.79%
Management expense ratio before waivers or absorption ⁽²⁾	0.61% ⁽⁵⁾	0.61%	0.67%	0.73%	0.72%	0.74%	0.62% ⁽⁵⁾	0.64%	0.70%	0.76%	0.74%	0.79%
Trading expense ratio ⁽³⁾	0.01% ⁽⁵⁾	0.04%	0.03%	0.06%	0.02%	0.02%	0.01% ⁽⁵⁾	0.04%	0.03%	0.06%	0.02%	0.02%
Portfolio turnover rate ⁽⁴⁾	4.18%	11.73%	8.68%	13.12%	3.12%	1.67%	4.18%	11.73%	8.68%	13.12%	3.12%	1.67%
Net asset value per unit (\$)	17.26	15.54	15.55	13.83	13.71	11.23	14.92	13.58	13.01	12.45	12.50	10.50

	CLASS I						CLASS I(H)					
	June 30, 2017	Dec 31, 2016	Dec 31, 2015	Dec 31, 2014	Dec 31, 2013	Dec 31, 2012	June 30, 2017	Dec 31, 2016	Dec 31, 2015	Dec 31, 2014	Dec 31, 2013	Dec 31, 2012 ⁽⁶⁾
Total Net Asset Value (\$) (000's) ⁽¹⁾	274,281	233,140	190,053	138,606	101,261	59,691	74,166	59,204	43,071	35,744	17,955	9,015
Number of units outstanding (000's) ⁽¹⁾	17,219	16,261	13,239	10,855	8,002	5,762	5,001	4,385	3,330	2,887	1,443	864
Management expense ratio ⁽²⁾	0.08% ⁽⁵⁾	0.08%	0.14%	0.20%	0.18%	0.18%	0.09% ⁽⁵⁾	0.10%	0.15%	0.21%	0.20%	0.21% ⁽⁵⁾
Management expense ratio before waivers or absorption ⁽²⁾	0.08% ⁽⁵⁾	0.08%	0.14%	0.20%	0.18%	0.18%	0.09% ⁽⁵⁾	0.10%	0.15%	0.21%	0.20%	0.21% ⁽⁵⁾
Trading expense ratio ⁽³⁾	0.01% ⁽⁵⁾	0.04%	0.03%	0.06%	0.02%	0.02%	0.01% ⁽⁵⁾	0.04%	0.03%	0.06%	0.02%	0.02% ⁽⁵⁾
Portfolio turnover rate ⁽⁴⁾	4.18%	11.73%	8.68%	13.12%	3.12%	1.67%	4.18%	11.73%	8.68%	13.12%	3.12%	1.67%
Net asset value per unit (\$)	15.93	14.34	14.36	12.77	12.65	10.36	14.83	13.50	12.93	12.38	12.44	10.44

⁽¹⁾ This information is derived from the Fund's audited annual financial statements and the Fund's unaudited semi-annual financial statements. For the financial years beginning on or after January 1, 2014, the financial highlights were derived from the Fund's financial statements prepared in accordance with IFRS. For the financial year ended December 31, 2013, the financial highlights were restated to comply with IFRS reporting. For financial years beginning before January 1, 2013, the financial highlights were derived from the Fund's financial statements prepared in accordance with Canadian GAAP. For financial years beginning on or after January 1, 2013, all references to "Net Assets" or "Net Assets per Unit" in the financial highlights are references to net assets attributable to holders of redeemable units determined in accordance with IFRS as presented in the financial statements of the Fund.

⁽²⁾ Management expense ratio is based on total expenses (excluding broker commissions and other portfolio transaction costs) for the stated year and is expressed as an annualized percentage of daily average Net Asset Value during the period.

⁽³⁾ The trading expense ratio represents total commissions and other portfolio transaction costs expressed as an annualized percentage of daily average Net Asset Value during the period.

⁽⁴⁾ The Fund's portfolio turnover rate indicates how actively the Fund's portfolio advisor manages its portfolio investments. A portfolio turnover rate of 100% is equivalent to the Fund buying and selling all of the securities in its portfolio once in the course of the year. The higher a Fund's portfolio turnover in a year, the greater the trading costs payable by the Fund in the year, and the greater the chance of an investor receiving taxable capital gains in the year. There is not necessarily a relationship between a high turnover rate and the performance of the Fund.

⁽⁵⁾ Percentages are annualized.

⁽⁶⁾ The Class I(H) units of this Fund were first issued on February 13, 2012.

DFA International Vector Equity Fund

Management Report of Fund Performance

Management Fees

Dimensional receives management fees for its service as Manager of the Fund. These fees are calculated as a percentage of the Net Asset Value of the Fund and are calculated daily and payable monthly. The table below shows the annual management fee rates for each class of units of the Fund.

Annual Rate	Class A	Class F	Class I
Management Fees	1.45%	0.45%	0%

Annual Rate	Class A(H)	Class F(H)	Class I(H)
Management Fees	1.45%	0.45%	0%

Dimensional pays a trailer fee to dealers out of the management fee received for Class A units of the Fund. This trailer fee is generally calculated as a percentage of the average daily Net Asset Value of Class A units of the Fund held by the dealer's clients or by the dealer on behalf of the clients. The maximum annual trailer fee for the Class A units of the Fund is 1.00%. The balance of the management fees are for the general management and administrative services provided to the Fund. The table below shows a breakdown of the services received by the Fund as a percentage of management fees.

	Class A	Class F	Class I
Management and Administrative Services	31%	100%	0%
Trailer Fees	69%	0%	0%
	100%	100%	0%

	Class A(H)	Class F(H)	Class I(H)
Management and Administrative Services	31%	100%	0%
Trailer Fees	69%	0%	0%
	100%	100%	0%

No management fees are charged to the Fund with respect to Class I and Class I(H) units. Instead, each Class I and Class I(H) investor pays a separate fee directly to the manager of the Fund.

Past Performance

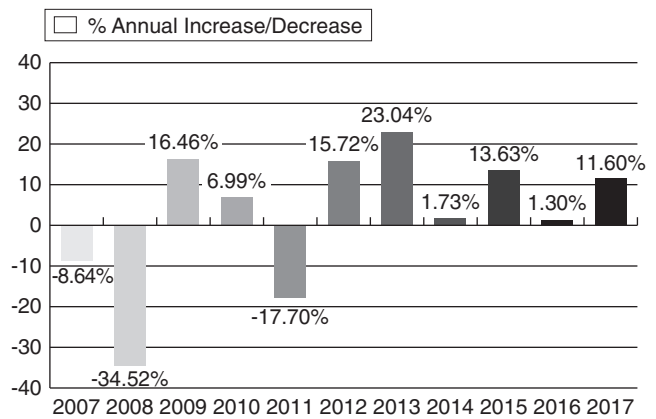
On November 17, 2009, the DFA International Small Cap Fund merged into the DFA International Vector Equity Fund (formerly, the DFA International Value Fund). In connection with the merger, the investment objectives and strategies of the DFA International Vector Equity Fund were changed to allow the fund to purchase a broad portfolio of securities of non-Canadian and non-U.S. companies with an emphasis on small and value companies. Additionally, the DFA International Vector Equity Fund also began purchasing securities of companies from emerging markets as well as from developed markets. The changes to the fund's investment objectives and strategies could have affected the performance of the fund, had they been in effect throughout the performance measurement periods presented.

The performance information shown assumes that all distributions made by the Fund during the periods shown were reinvested in additional units of the Fund. The performance information does not take into account any sales, redemption, distribution, or other optional charges that would have reduced returns or performance. How the Fund has performed in the past does not necessarily indicate how it will perform in the future.

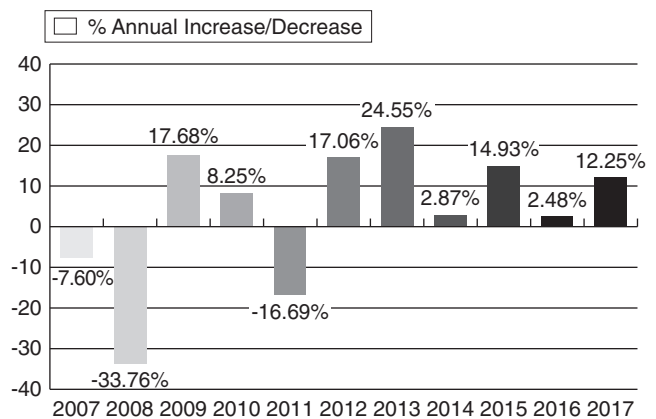
Year-by-Year Returns

The bar charts show the Fund's annual performance for each of the financial years shown, and how the Fund's performance has changed from year to year. The charts show, in percentage terms, how much an investment made on the first day of each financial year would have increased or decreased by the last day of that financial year, or as the case may be, of the interim period.

DFA International Vector Equity Fund – Class A



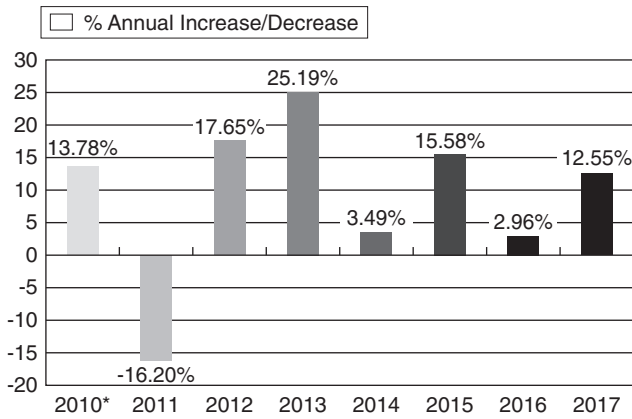
DFA International Vector Equity Fund – Class F



DFA International Vector Equity Fund

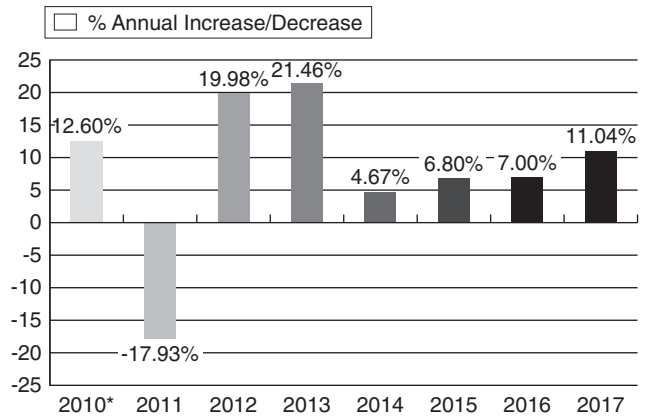
Management Report of Fund Performance

DFA International Vector Equity Fund – Class I



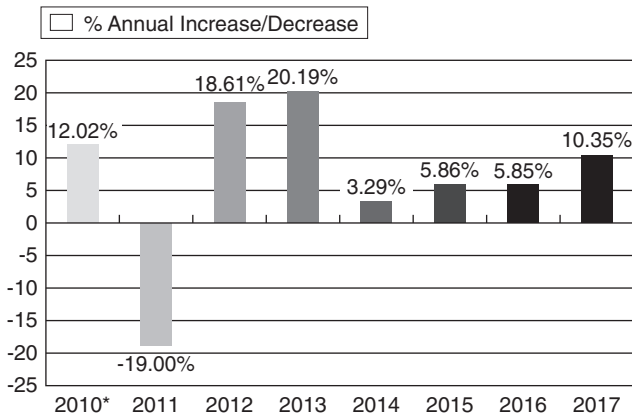
* The information for 2010 is for the period from May 4, 2010 to December 31, 2010.

DFA International Vector Equity Fund – Class F(H)



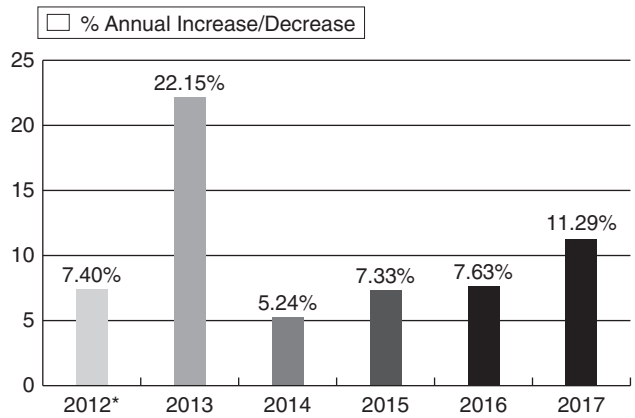
* The information for 2010 is for the period from July 23, 2010 to December 31, 2010.

DFA International Vector Equity Fund – Class A(H)



* The information for 2010 is for the period from July 23, 2010 to December 31, 2010.

DFA International Vector Equity Fund – Class I(H)



* The information for 2012 is for the period from February 13, 2012 to December 31, 2012.

DFA International Vector Equity Fund

Management Report of Fund Performance

Summary of Investment Portfolio

as at June 30, 2017 (unaudited)

Country Mix	% of Fund's Net Asset Value
Australia	4.62
Austria	0.52
Belgium	1.06
Brazil	1.73
Chile	0.33
China	7.18
Colombia	0.08
Czech Republic	0.07
Denmark	1.33
Finland	1.39
France	5.92
Germany	5.99
Great Britain	12.25
Greece	0.06
Hong Kong	2.28
Hungary	0.11
India	3.29
Indonesia	0.63
Ireland	0.54
Israel	0.48
Italy	2.22
Japan	19.03
Malaysia	0.76
Mexico	1.04
Netherlands	1.96
New Zealand	0.30
Norway	0.69
Philippines	0.32
Poland	0.48
Portugal	0.18
Russia	0.20
Singapore	0.95
South Africa	1.98
South Korea	4.67
Spain	2.03
Sweden	2.33
Switzerland	4.62
Taiwan	4.47
Thailand	0.60
Turkey	0.34
United States of America	0.03
Cash and Cash Equivalents	0.27
Currency Forwards*	0.41
Net Other Assets	0.26
	<u>100.00</u>

Top 25 Issuers	% of Fund's Net Asset Value
01 Royal Dutch Shell PLC	1.09
02 HSBC Holdings PLC	0.89
03 Samsung Electronics Co., Ltd.	0.71
04 Total SA	0.58
05 Daimler AG	0.50
06 Nestle SA	0.47
07 China Construction Bank Corp., Class H	0.45
08 Toyota Motor Corp.	0.44
09 Novartis AG	0.43
10 Vodafone Group PLC	0.41
11 Banco Santander SA	0.39
12 BHP Billiton Ltd.	0.38
13 BNP Paribas	0.38
14 Allianz SE	0.36
15 Mitsubishi UFJ Financial Group Inc.	0.34
16 BP PLC	0.34
17 Industrial & Commercial Bank of China, Class H	0.31
18 Honda Motor Co. Ltd.	0.30
19 Australia & New Zealand Banking Group Ltd.	0.29
20 BASF SE	0.29
21 Assicurazioni Generali SpA	0.27
22 Volkswagen AG	0.27
23 Bayerische Motoren Werke AG	0.27
24 ING Groep NV	0.25
25 Glencore Xstrata PLC	0.25
	<u>10.66</u>
Total Net Asset Value:	\$718,033,425

All holdings in the Fund are long positions.

The Fund's investment portfolio may change due to the Fund's ongoing portfolio transactions. Quarterly updates are available within 60 days of each quarter end where an annual or interim report is not published by visiting www.ca.dimensional.com or by calling Dimensional collect at 604-685-1633 or by writing to Dimensional at 745 Thurlow Street, Suite 2110, Vancouver, BC, Canada, V6E 0C5.

* Currency Forwards are hedged against Classes A(H), F(H) and I(H) of the Fund.